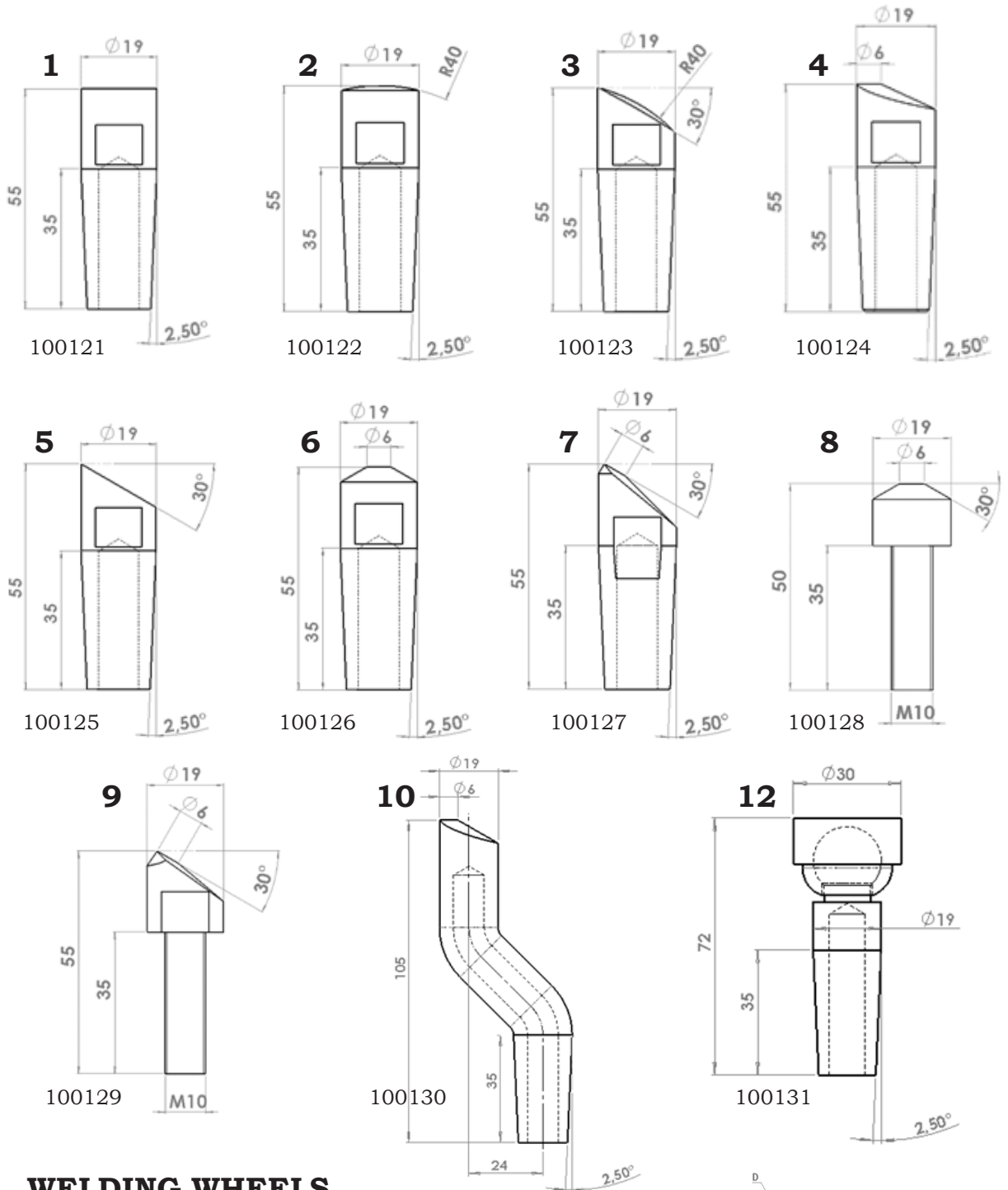


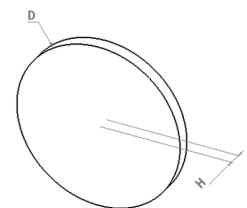
# KEMEC

## SPOT WELDING ELECTRODES



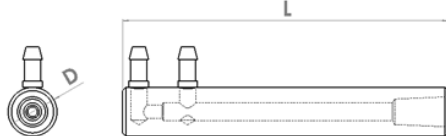
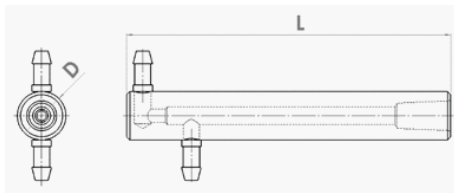
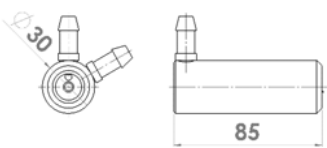
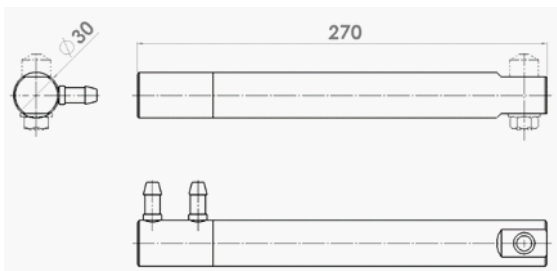
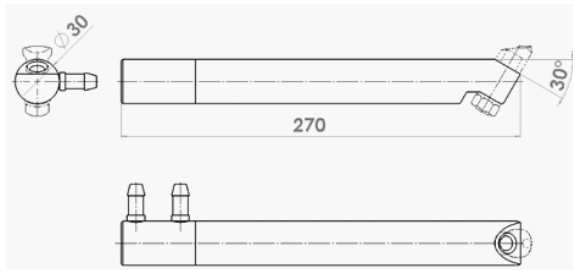
## WELDING WHEELS

	H	D		H	D
100181	16	100	100183	16	200
100182	16	150	100184	16	230
100186	16	160	100185	16	330

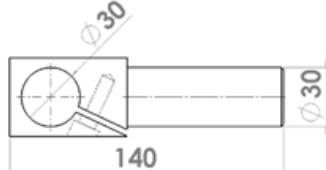
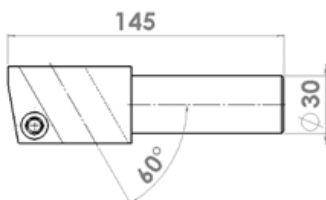


# KEMEC

## ELECTRODE HOLDERS

<b>1</b>		100158	D	L
		100151	20	200
		100152	30	300
<b>2</b>		100153	D	L
		100154	30	200
			30	300
<b>3</b>		100155	D	L
			30	85
<b>4</b>		100156	D	L
			30	270
<b>5</b>		100157	D	L
			30	270

## ARMS

<b>1</b>		100160	D	L
			30	140
<b>2</b>		100161	D	L
			30	145